

---

# Building the Autism & Neurodevelopmental Disorders Institute (ANDI)

June 14, 2017

---

THE GEORGE  
WASHINGTON  
UNIVERSITY

---

WASHINGTON, DC



---

## Tonight's Panelists

***Molly Whalen*** – Executive Director of the DC Association for Special Education & parent of two children with autism

***Dr. Ashley Darcy-Mahoney*** – Director of Infant Research in ANDI & Assistant Professor in the School of Nursing at GW & CNHS

***Dr. Jennifer Frey*** – Director of the Early Childhood Research Program in ANDI & Assistant Professor in the Graduate School of Education & Human Development at GW

***Dr. Kevin Pelfrey*** – Carbonell Family Professor & Director of ANDI at George Washington University & CNHS

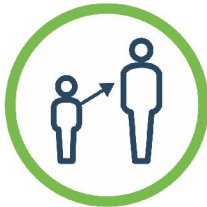
# The Vision for ANDI



# What Makes **ANDI** Unique?



Treating Women & Girls with Autism



Enhancing the Transition to Adulthood



Connecting Research & Policy



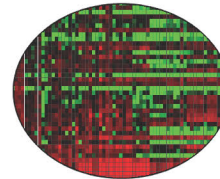


# Research

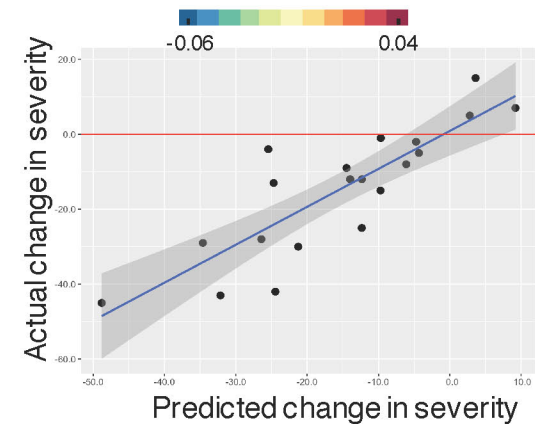
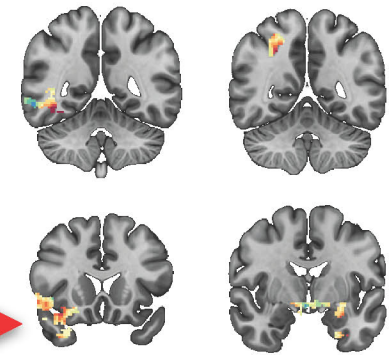
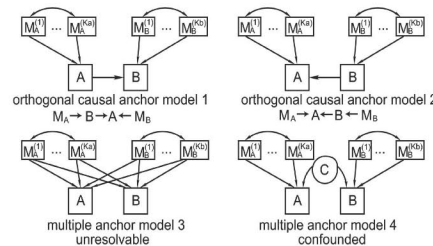
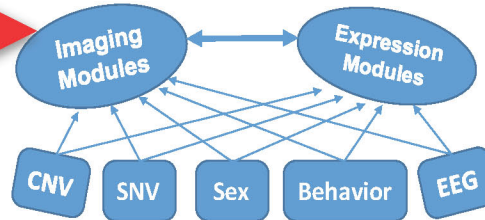
# Molecules to Mind, Lifespan Translation



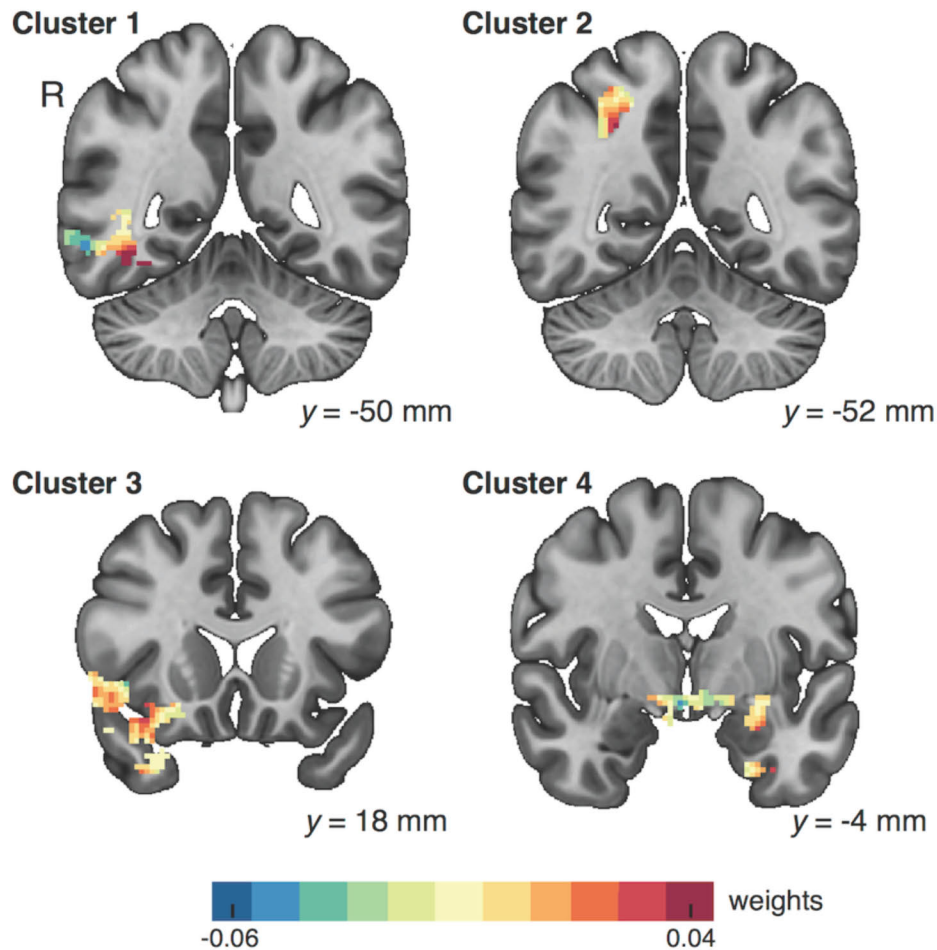
Neuroimaging Modules  
(T1 - T2)



Gene Expression Modules



# A Precision Medicine Approach



Yang et al. (2016)  
*Nature – Translation  
Psychiatry*





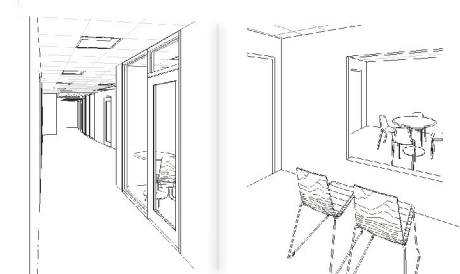
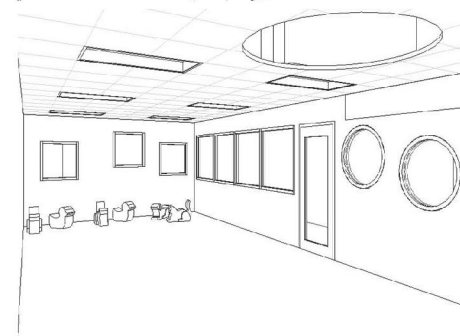
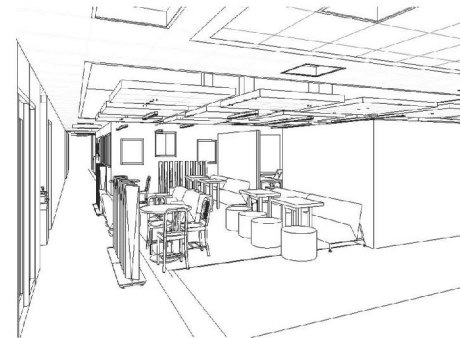
Clinical Care



# Translational Research at the Virginia Science & Technology Campus



Estimated completion, Winter 2017



## Offering Evidence-based Treatments







# Policy & Communications

# Policy & Communications



U.S. Department of Health & Human Services

**IACC** INTERAGENCY AUTISM COORDINATING COMMITTEE

Get Email Updates | Public Comments | Contact

Search IACC Website **GO!**

[HOME](#) [ABOUT IACC](#) [ABOUT OARC](#) [NEWS](#) [MEETINGS](#) [PUBLICATIONS](#) [FUNDING](#) [RESOURCES](#)

**Share your Thoughts**

2016 Strategic Plan - Responses to the IACC Request for Public Comment

**Latest Activity** | Latest Meetings | Latest News | Video & Multimedia | About IACC

[IACC Full Committee Meeting](#)  
October 26, 2016

- Update from Autistica, UK: Premature Mortality
- Autism in Women and Girls
- IACC Strategic Plan Update

---

IACC 2016 Strategic Plan Update

- [Working Group Members](#)

**Latest Publications**

[View All Publications >](#)

**Portfolio Analysis Web Tool**

**Get Email Updates**





## SHARE



SHARE  
20538



TWEET



PIN  
23



COMMENT  
55




EMAIL

KEVIN PELPHREY SCIENCE 11.25.16 7:00 AM

## AUTISTIC PEOPLE CAN SOLVE OUR CYBERSECURITY CRISIS



Vital jobs in online security are going unfilled. And there are people in our midst, ideally suited to the work, who are unemployed. Connect the dots.  GETTY IMAGES

## MOST POPULAR



Progress to Date

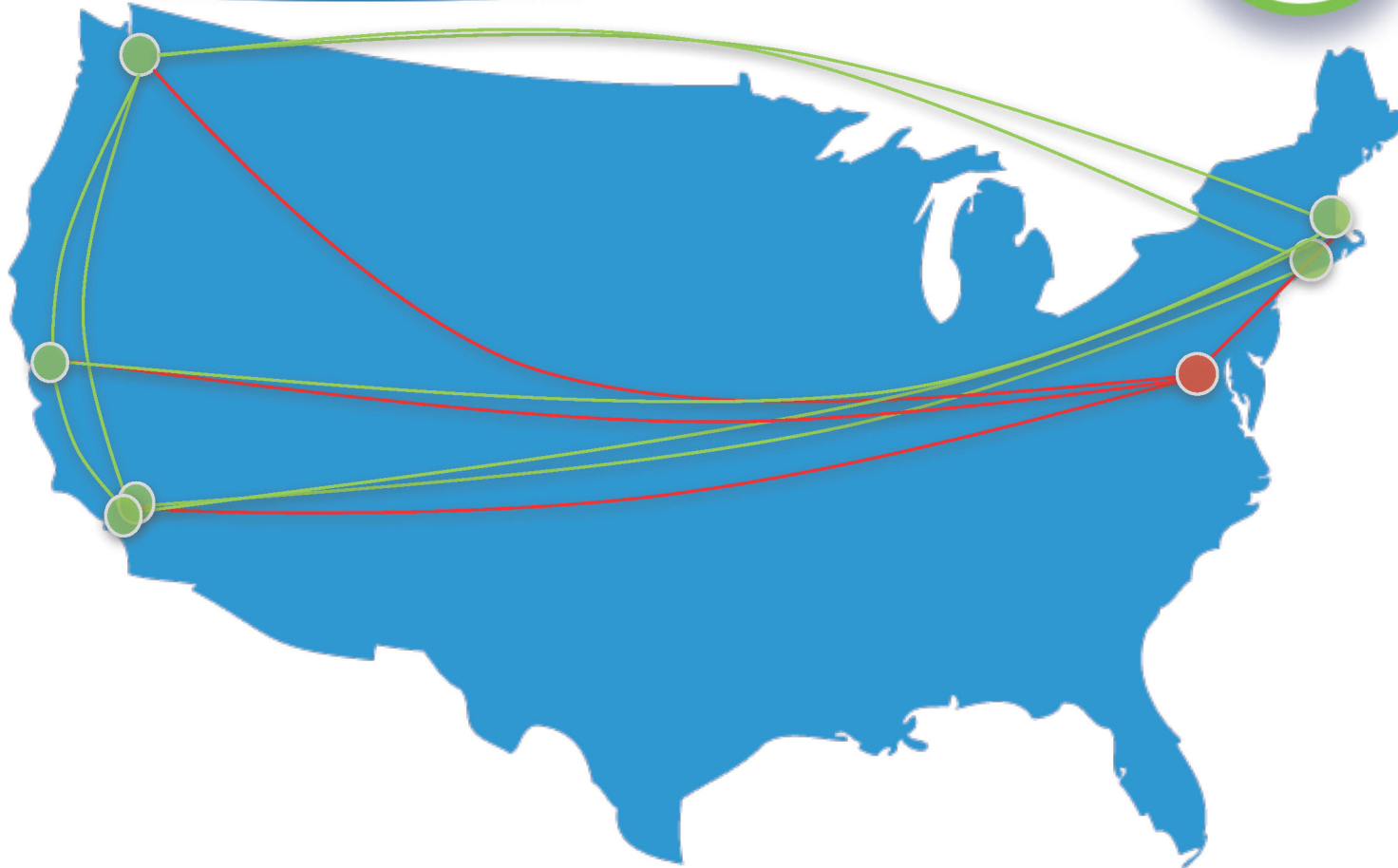
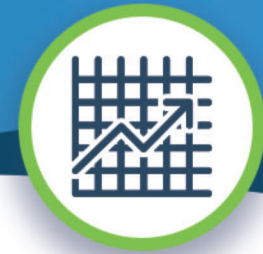
# Engaging Stakeholders & Partners



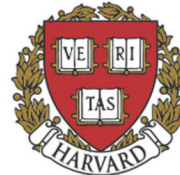
- 👥 Town Hall Meetings
- 👥 Research and Clinical Partners (CNHS, Psychiatry, Anthropology)
- 👥 Adults with Autism
- 👥 Medical Faculty Associates
- 👥 Community Leaders
- 👥 Business Leaders
- 👥 Students & Faculty at GW
- 👥 Administration at GW, CNHS, VSTC
- 👥 Faculty at CNHS
- 👥 Partner Institutions (CNHS, Georgetown, Howard, Hopkins, INOVA-TMI, University of Maryland, NIMH)
- 👥 Nursing Students
- 👥 Foundations/Research Funders (NIH, Simons, NSF, Autism Speaks)
- 👥 Families we will Serve
- 👥 Development Officers
- 👥 Postdoctoral Fellows
- 👥 Self-Advocacy Organizations
- 👥 Partner Schools (GSHED, GWSPH, Law, SMHS, CCAS)
- 👥 Teachers and School Administrations
- 👥 VA State and Federal Government Representatives
- 👥 Medical Students



# NIH Autism Center of Excellence: Girls Neurogenetics Network

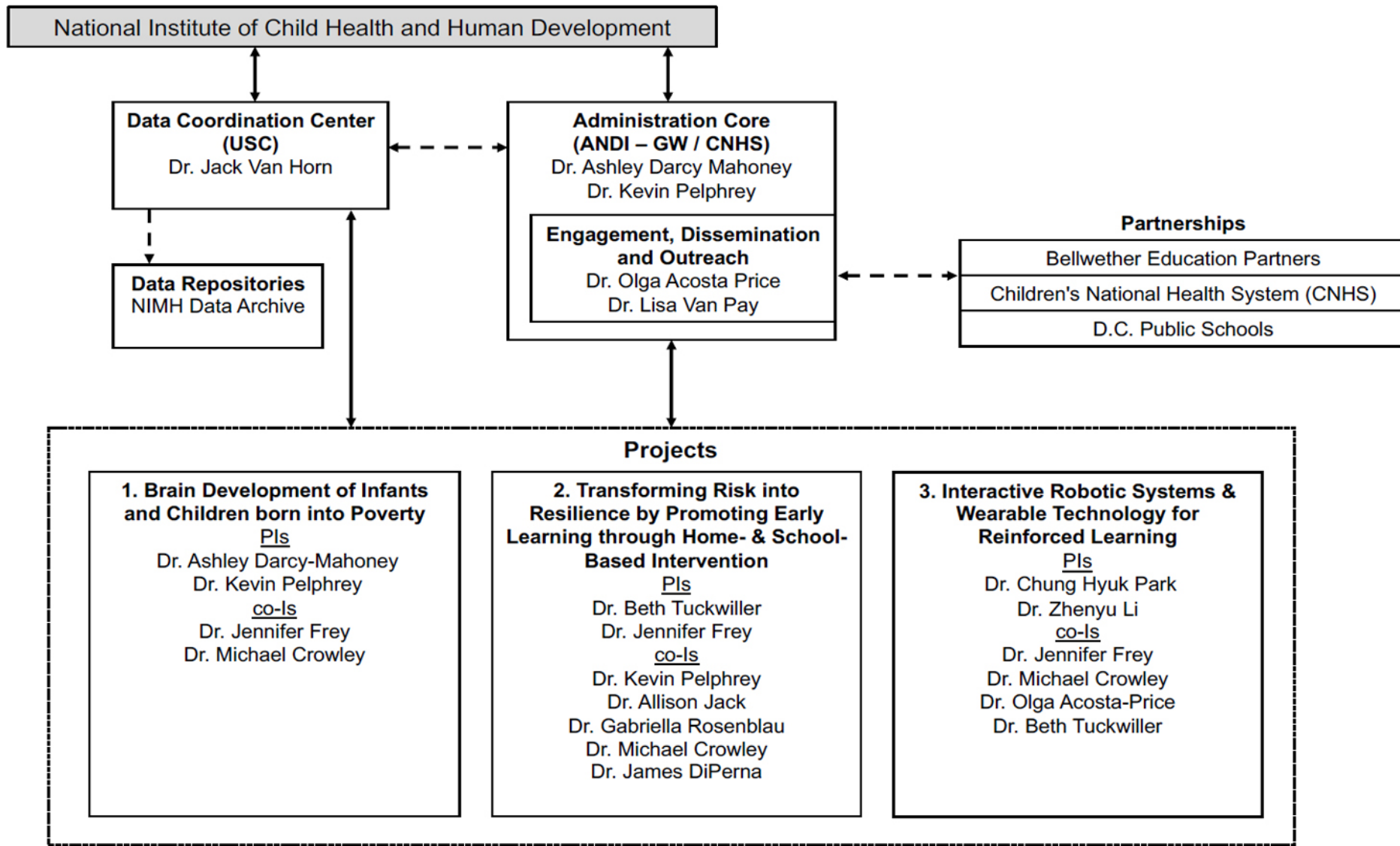


THE GEORGE  
WASHINGTON  
UNIVERSITY  
WASHINGTON, DC





# DC Center for Learning Disabilities Research and Treatment



---

## Tonight's Panelists

***Molly Whalen*** – Executive Director of the DC Association for Special Education & parent of two children with autism

***Dr. Ashley Darcy-Mahoney*** – Director of Infant Research in ANDI & Assistant Professor in the School of Nursing at GW & CNHS

***Dr. Jennifer Frey*** – Director of the Early Childhood Research Program in ANDI & Assistant Professor in the Graduate School of Education & Human Development at GW

***Dr. Kevin Pelfrey*** – Carbonell Family Professor & Director of ANDI at George Washington University & CNHS